

CELESTIAL

CONTENT

22001

22002

22003

22004

22005

22005-1 (blush,
with pleated

mesh)

22006

22007

22008

22009

22010

22011

22012

22013

22014

22015

22016

22018

22019

22020

22021

22022



Slanovskiy®

Model 22001

Original color: blush

*A-line dress with
transparent nude top
decorated with beaded
lace applications.*





Model 22002

Original color: ivory

*A-line dress with ivory
transparent top
decorated with beaded
lace*



Slanovskiy[®]

Model 22003

Original color: ivory

A-line dress with ball sleeves decorated with beaded lace.



Slanovskiij®

Model 22004

Original color: ivory

A-line dress with drapery at V-neckline decorated with beaded lace. Combination of nude lining and ivory tulle in the skirt.



Model 22005

Original color: ivory

*A -line dress with light
glittering skirt. 3d lace
top with high neckline
and a split.*



Model 22006

Original color: ivory

A -line dress with Chantilly lace top decorated with beaded lace. Light skirt is decorated with beaded lace.



Model 22007

Original color: ivory

A-line dress with asymmetrical straps, Chantilly top decorated with beaded lace.



Model 22008

Original color: ivory

A-line dress with deep V-neckline, the mesh drapery on the top. The bodice and waistline is decorated with beaded lace.



Model 22009

Original color: ivory

*Full length lace
mermaid decorated
with lace applications
and detachable
glittering train.*



Model 22009

Original color: ivory



Slanovskiy®

Model 22010

Original color: ivory

*Transparent full length
lace A-line dress with
dropped sleeves*



Model 22011

Original color: ivory

A-line dresses with top decorated with lace applications. Dropped sleeves are detachable.



Model 22012

Original color: blush

*Ball gown dress with
sweetheart neckline.
Dress is decorated
with beaded lace
applications*



Model 22012

Original color: blush



Model 22013

Original color: blush

*Chiffon dress with top
and long sleeves
decorated with beaded
lace*



Model 22014

Original color: ivory

*Transparent lace
mermaid dress with
long sleeves*



Slanovskiy®

Model 22015

Original color: blush

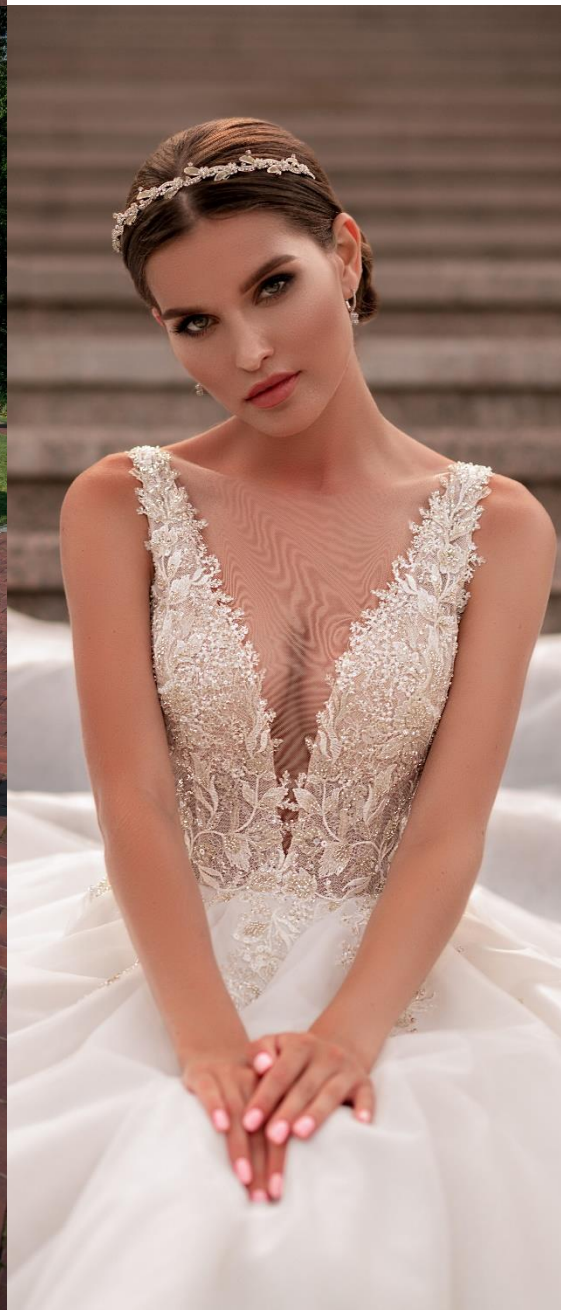
A-line full length lace dress with open back



Model 22016

Original color: ivory

*Ball gown with
Chantilly top
decorated with beaded
lace.*



Model 22018

Original color: ivory

*3d beaded lace
mermaid with
detachable belt.*



Model 22019

Original color: ivory

*Ball gown with
Chantilly lace top and
dropped long sleeves
decorated with beaded
lace.*



Slanovskiy®

Model 22020

Original color: blush

Full length glittering lace ball gown with beaded lace decoration at neckline, waist and sleeves. Long sleeves are detachable.





Model 22021

Original color: ivory

Veil included

*Crepe jumpsuit with
one shoulder lace top
decorated with beaded
lace.*



Slanovskiy®

Model 22022

Original color: ivory

*Beaded lace jumpsuit
with deep neckline.*



The price is EXW. All shipping costs are paid by the customer. Prices are for sizes 40-48 (manufactory sizes) or 34-42 (European). The price for the dress above size 48 will increase from 5-20%. The order according to specific customer's measurements will increase the price (depending on the complexity of sewing and cutting) from 10% and above. The manufacturer reserves the right to change the configuration of macramé modules and lace print or applications, the price will change accordingly.

EU	UK	US	UKR/RU	Manufacture size	Bust cm	Waist cm	Hips cm
34	8	4	40	40	80	61	86
36	10	6	42	42	84	65	90
38	12	8	44	44	88	69	94
40	14	10	46	46	92	73	98
42	16	12	48	48	96	77	102
44	18	14	50	50	100	81	106
46	20	16	52	52	104	85	110
48	22	18	54	54	108	89	114
50	24	20	56	56	112	93	118
52	26	22	58	58	116	97	112
54	28	24	60	60	120	101	126

WWW.SLANOVSKIY.COM

<https://www.facebook.com/Slanovskiy/>

https://instagram.com/slanovskiy_brand

<https://www.youtube.com/@slanovskiy>

<https://www.tiktok.com/@slanovskiy>

<https://www.linkedin.com/company/slanovskiy>

<https://www.pinterest.com/slanovskiy>